



DATA BRIDGE
DYNAMIC

Databridge Dynamic Private Limited
414/A, Orion Business Park
Near Cinewonder Mall
Thane (W) 400607
India
info@databridgedynamic.com



COMPACT 4G LTE SECURED CELLULAR WIFI IOT GATEWAY

MODEL DDCR 8362 F



SYNOPSIS

- DDCR 8362 F GATEWAY IS A CELLULAR DEVICE THAT PROVIDES DATA TRANSMISSION FUNCTION BY PUBLIC LTE / WCDMA NETWORK.
- IT SUPPORTS 1 * RS232 (OR RS485), 1 * ETHERNET LAN, 1 * ETHERNET LAN/WAN AND 1 * WIFI PORTS THAT CAN CONVENIENTLY AND TRANSPARENTLY CONNECT YOUR EXISTING SERIAL AND ETHERNET DEVICES TO A CELLULAR NETWORK
- IT HAS BEEN WIDELY USED ON M2M FIELDS, SUCH AS SELF-SERVICE TERMINALS, INTELLIGENT TRANSPORTATION, SMART GRID, INDUSTRIAL AUTOMATION, TELEMETRY, FINANCE, POS, WATER SUPPLY MANAGEMENT, IRRIGATION, ENVIRONMENT PROTECTION...

STABILITY & RELIABILITY

- I MULTIPLE PROTECTION MECHANISM TO ENSURE SYSTEM STABILITY, ALWAYS KEEPING ONLINE
- HARDWARE AND SOFTWARE WDT
- AUTO RECOVERY MECHANISM, INCLUDING ONLINE DETECT, AUTO REDIAL WHEN OFFLINE TO MAKE GATEWAY ALWAYS ONLINE
- IT USES INDUSTRIAL 32-BITS CPU WITH HIGHLY INTEGRATED AND FEATURE-RICH IEEE 802.11N 2X2 2.4 GHZ SYSTEM-ON-A-CHIP (SOC) FOR ADVANCED WLAN PLATFORMS.

Ethernet	1.5KV magnetic isolation protection 15KV ESD protection
Serial	15KV ESD Protection
SIM / UIM Port	15KV ESD protection
Power Port	Reverse-voltage and Overvoltage protection
Antenna port	Lightening protection (optional)



COMMUNICATION & CONVENIENCE

- RS232 (OR RS485), ETHERNET & WI-FI PORTS TO CONNECT SERIAL, ETHERNET & WIFI DEVICES
- WAN PORT & PPPoE PROTOCOL TO CONNECT TO ADSL
- ENTER INTO COMMUNICATION STATE AUTOMATICALLY WHEN POWERED
- CONVENIENT CONFIGURATION AND MAINTENANCE INTERFACE WEB OR CLI

PERFORMANCE RICH FEATURES

- Dual-link intelligent switching function between Primary Backup card. Active/Passive
- 2G/3G/4G/Static IP/DHCP/PPPoE WAN access methods
- Double link backup between Cellular and WAN (PPPoE, ADSL)
- VPN Client (PPTP, L2TP, IPSEC, OPENVPN, GRE)
- Remote management, SYSLOG, SNMP, TELNET, SSHD, HTTPS etc.,
- Local and Remote firmware upgrade, import and export configure file.
- NTP Client
- Multiple DDNS providers
- MAC Address clone, PPPoE Server
- WiFi 802.11 b/g/n, AP Client, Adhoc, Repeater Bridge mode
- WiFi support WEP, WPA, WPA2 encryption and MAC address filter
- Multi-Triggers, SMS, Ring and Data
- APN/VPDN
- DHCP server and client, Firewall, SNAT, DNAT, DMZ host, URL block, QoS, Traffic statistics, Real time link speed statistics etc.
- SPI firewall, VPN traversal, access control, URL filtering, etc.
- EoIP tunnels.
- Port Bridging.
- Packet filter
- Full protocol support, TCP/IP, UDP, ICMP, HTTP, HTTPS, TELNET, SNMP, SSHD, etc. SMTP, POP3, FTP is optional.
- Modbus RTU to Modbus TCP Conversion
- Modbus RTU / ModbusTCP to HTTPS
- Ethernet IP, ProfNet, SNMP, BACnet IP, DNP3.0 Protocols in Transparent Mode.
- HTTP and MQTT v3.1.1
- MODBUS RTU/Modbus TCP Master interface for field devices
- RTU port RS232/RS485 factory settable to interface to multiple Modbus slave devices
- Connect up to 31 Modbus devices, 1000 Modbus registers support
- Modbus slave devices configuration using WEB interface.
- Supports Modbus function codes 01, 02, 03 and 04
- Supports Modbus data types 16-bit Integer, Float, Swapped Float, 32-bit Integer and 32-bit Swapped Integer
- User can set Modbus Slave Device configurations e.g., Device ID, Holding Register addresses, Length etc. via WEB Interface
- Local Log storage.
- SMS through Telnet.



CELLULAR SPECIFICATIONS

STANDARD & BAND

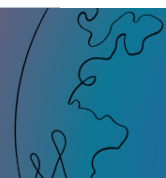
- FDD-LTE B1 to B8 and B28
- FDD LTE 2600/2100/1800/900/800MHz, 700/1700/2100MHz (optional)
- TDD-LTE B38/B39/B40/B41
- TDD LTE 2300/2500/2600 MHz
- TD-SCDMA: B34, B39
- HSPA+/UMTS B1/B2/B5/B8
- WCDMA/HSPA+: Band 1, 8, TD-SCDMA: Band 34, 39
- EV-DO: BC0
- CDMA 1x: BC0
- EDGE/GPRS/GSM 850/900/1800/1900MHz
- GPRS Terminal Device Class: Class B
- GPRS Coding Schemes CS1 to CS4

BANDWIDTH

- FDD-LTE : Downstream rate 150Mbps, Uplink rate 50Mbps
- TD-LTE : Downstream rate 130Mbps, Uplink rate 35Mbps
- TD-HSPA+ : Downstream rate 4.2Mbps, Uplink rate 2.2Mbps
- DC-HSPA+ : Downstream rate 42Mbps, Uplink rate 5.76 Mbps
- HSPA+ : Downstream rate 21Mbps, Uplink rate 5.76 Mbps
- UMTS : 384Kbps
- TX power : <23 dBm
- RX sensitivity : <-97 dBm
- Antennae gain : 3dB. Higher gains possible.

WIFI SPECIFICATION

- IEEE802.11 b/g/n
- 54Mbps for 11b/g & 144 Mbps for 11n
- WEP, WPA, WPA2. WPS Optional
- Tx Power : 15 +/- 2dbm
- Sensitivity : <-72dBm@54Mbps
- Antennae gain : 5dB



HARDWARE SYSTEM

Ethernet	1 of 10/100 Mbps LAN and 1 * WAN/LAN configurable Ethernet Port, Auto MDI/X, 1.5KV magnetic isolation protection
Serial	1 * RS 232 / RS 485 port 15KV ESD protection
	Data bits 5, 6, 7, 8
	Stop bits 1, 1.5 (optional), 2
	Parity None, Even, Odd, (space, mark) (optional)
	Baud rate 2400 to 115200 bps
LED Indicator	PWR, Online, LAN, LAN/WAN, Wi-Fi
Antenna	1 or 2 standard SMA Female Interface. 1 * Wi-Fi, SMA Male interface. Characteristic impedance 50 ohm for both
Reset	Restore the Gateway to its original factory default settings

POWER SUPPLY

Standard Power	DC 12V/1.5A, Power range: DC 5 to 36V
Connectors	2 Pin, 3.5mm Terminal Block, Reverse and Overvoltage protection

POWER CONSUMPTION

Standard Power	DC 12V/1.5A, Power range: DC 5 to 36V
Connectors	2 Pin, 3.5mm Terminal Block, Reverse and Overvoltage protection



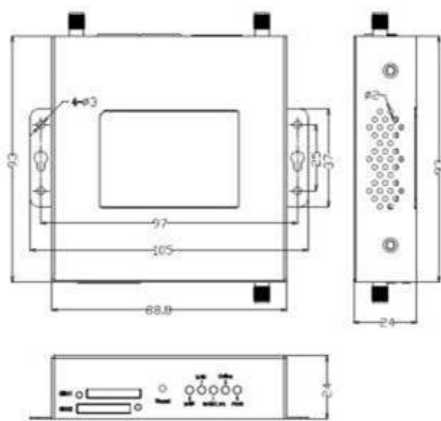
OTHER SPECIFICATIONS

Power supply	Standard Power	DC 12V/1.5A 12VDC to 36VDC
	Connectors	2 Pin, 3.5mm Terminal block
Power consumption	Standby	90 to 100 mA.@12VDC
	Working	150 to 250 mA. @12VDC
Physical Characteristics	Housing	Metal. IP30 protection
	Dimensions	93 * 89 * 24 mm
	Weight	250g
	Mounting	Desktop. DIN Rail is optional Accessory
Environmental Limits	Operating Temperature	-35 to +75°C
	Storage Temperature	-40 to +85°C
	Operating Humidity	95% non-condensing
	MTBF	500,000 hours

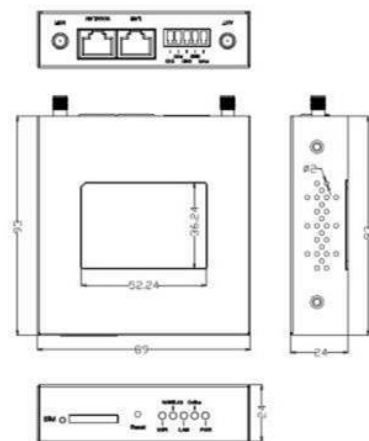
ORDERING CODE

DDCR 8362 XXX F

DDCR 8362	Compact 4G Cellular Gateway – Dual Sim	
XXX	485	1 * 485 Port
	232	1 * 232 Port
F	Fixed	



Wall Mount Style Router Dimension



DIN Rail Style Router Dimension

